

1. A segment of a DNA strand has the following bases:
- TAC GAT
- What is the complementary strand of DNA?
- A UAG CAU
  - B TAG CAT
  - C ATG CTA
  - D AUG CUA
2. Which process must occur before DNA information is moved out of the nucleus by mRNA?
- A replication
  - B duplication
  - C translation
  - D transcription
3. Which relationship is **most similar** to the relationship below?
- tRNA : ribosome
- A book : publisher
  - B truck : factory
  - C key : lock
  - D baker : pie
4. Before a cell goes through either mitosis or meiosis, which process **must** be carried out by the DNA in the nucleus?
- A replication
  - B nondisjunction
  - C transcription
  - D translation
5. The two molecules of DNA produced by successful replication have which characteristics?
- A They each contain identical chromosomes.
  - B They each have different combinations of guanine, adenine, thymine, and cytosine.
  - C They each contain one new and one old strand.
  - D Their helixes twist in opposite directions.
6. Sexual reproduction provides for what to occur?
- A cloning
  - B budding
  - C genetic stability
  - D genetic variation

7. Which would **most likely** favor species survival in changing environmental conditions?
- A genetic recombination
  - B energy involvement in gamete production
  - C length of life cycle
  - D number of offspring produced
8. Which term **best** describes the type of cell division in which parent cells produce daughter cells with the same number of chromosomes as the parent cells?
- A mitosis
  - B meiosis
  - C spermatogenesis
  - D oogenesis
9. What is the **primary** cause of variation in the offspring of sexually reproducing organisms?
- A cytoplasmic division
  - B environmental changes
  - C mutation
  - D recombination of alleles
10. Which is responsible for most genotypic and phenotypic variation among humans?
- A meiosis
  - B budding
  - C mitosis
  - D regeneration
11. Many plants are capable of asexual reproduction through budding and runner production, as well as sexual reproduction through flowering. Under which conditions is sexual reproduction advantageous?
- A when a plant is living in extreme but stable conditions
  - B when the environment is unstable and changing
  - C when individuals of a species are geographically isolated
  - D when a plant's particular genotype is favorable

12. In genetics research, what is the purpose of a test cross?
- A to determine the phenotypes of the parents
  - B to determine the genotypes of the parents
  - C to determine whether or not two parents could produce viable offspring
  - D to determine how many offspring can be produced by two parents
13. Several matings between the same male black guinea pig and female brown guinea pig produce a total of 12 brown and 14 black guinea pigs. If black is dominant and brown is recessive, what are the genotypes of the parents?
- A  $BB \times bb$
  - B  $Bb \times Bb$
  - C  $BB \times Bb$
  - D  $Bb \times bb$
14. Most sex-linked, recessive traits—including hemophilia and color blindness—appear in males. This phenomenon is **best** explained by which statement?
- A Males have an X chromosome with dominant genes.
  - B Most of the genes on the X and Y chromosomes of males are recessive.
  - C In males, the recessive sex-linked genes appear only on the Y chromosome.
  - D In males, the Y chromosome lacks the genes needed to mask the recessive genes on the X chromosome.

15. Examine the tables below.

Couple	Mother's Blood Type	Father's Blood Type
I	AB	O
II	O	A
III	B	AB

Baby	Baby's Blood Type
X	AB
Y	A
Z	O

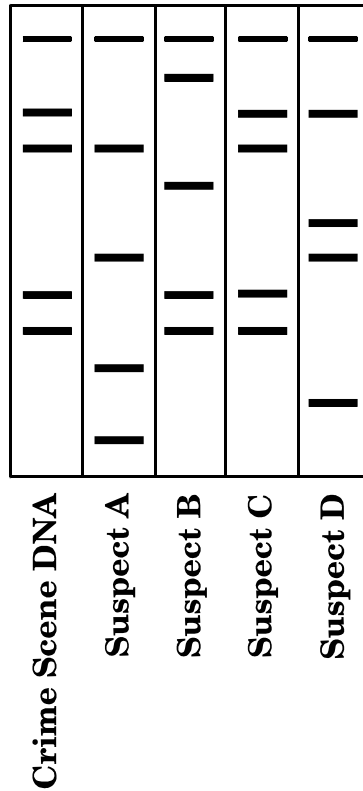
Which baby belongs to each of the couples?

- A I-X, II-Y, III-Z
- B I-Y, II-Z, III-X
- C I-Z, II-X, III-Y
- D I-X, II-Z, III-Y
- 
16. Huntington's disease is a dominant trait. What are the chances that a child will develop Huntington's disease if one parent is heterozygous and the other is normal?
- A 0 out of 4
- B 1 out of 4
- C 2 out of 4
- D 3 out of 4

17. Some flowers show incomplete dominance. If  $RR$  = white and  $R'R'$  = red, which phenotypic ratio would be expected in the offspring of two pink flowers?
- A 4 red : 0 pink : 0 white
  - B 0 red : 4 pink : 0 white
  - C 3 red : 0 pink : 1 white
  - D 1 red : 2 pink : 1 white
18. A couple has five children, all with blood type A. The mother's blood type is O, and the father's blood type is A. Based on this information, which describes the **most probable** genotype of the father?
- A diploid
  - B haploid
  - C heterozygous
  - D homozygous
19. A karyotype of a human female shows that she has only one sex chromosome. Which genotype would represent her genetic condition?
- A XO
  - B XXX
  - C XY
  - D XYY

20. The diagram below represents DNA fingerprints which are the result of gel electrophoresis done on several DNA samples found at a crime scene.

**Gel Electrophoresis Results**



Which suspect is linked to the crime scene by this DNA analysis?

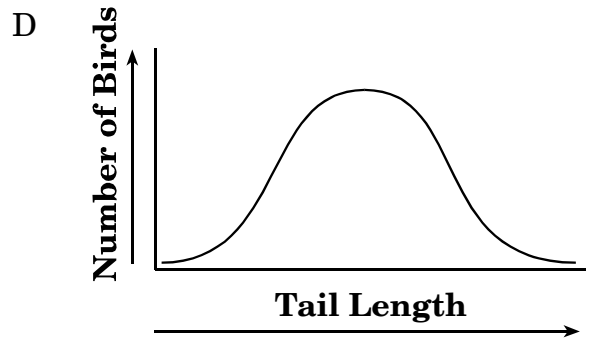
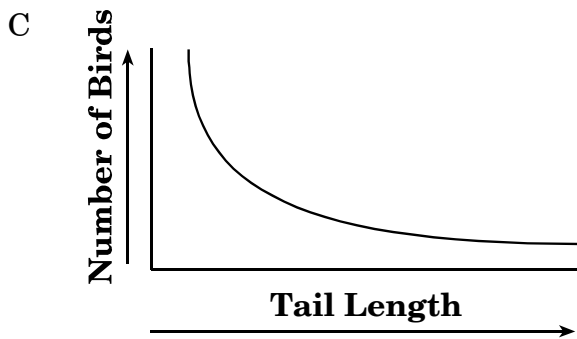
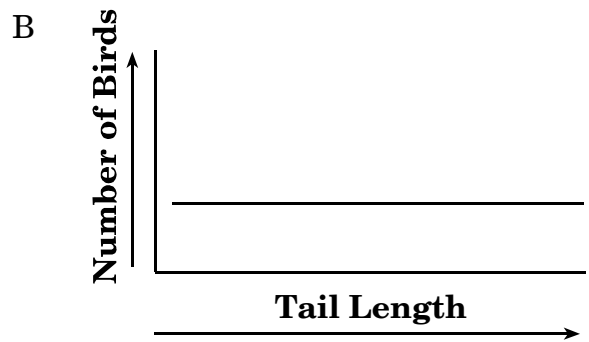
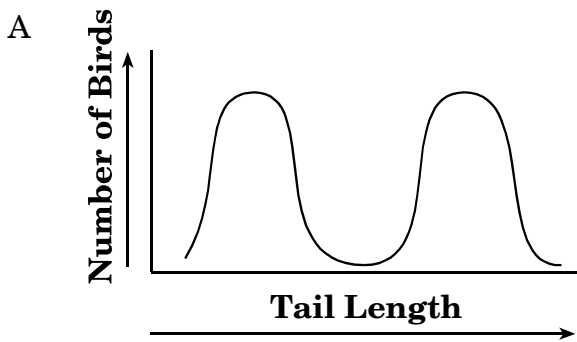
- A Suspect A
- B Suspect B
- C Suspect C
- D Suspect D

21. A plant nursery only grew one type of tomato. All of their tomatoes died from the same disease. What was ***most likely*** true of the tomato plant population?
- A It had a lot of resistance to disease.
  - B It had a few plants that were resistant to the disease.
  - C It had too much variation in its genes.
  - D It had little variation in its genes.

22. Most individuals of a certain species of bird have medium-length tails, but tail length ranges within the species from very short to very long.



If a new predator arrived that preferred birds with medium-length tails, which graph describes the *most likely* result?



23. According to evolutionary theory, which **best** describes the first living organisms from which all life evolved?
- A aerobic
  - B eukaryotic
  - C photosynthetic
  - D prokaryotic
24. Cauliflower, cabbage, broccoli, and kale have a close evolutionary relationship. Which is the **best** evidence for this relationship?
- A similar growth season
  - B percentage of identical DNA sequences
  - C common geographic distribution
  - D equal day length preference
25. A paleontologist is comparing the fossilized remains of two primates. Both animals had a prehensile tail. What can be concluded from this evidence?
- A They were not related.
  - B They lived on the ground.
  - C They evolved from a common ancestor.
  - D They had bipedal locomotion.
26. Variation within species was important to the development of Darwin's theory of evolution. Which statement does individual variation help explain?
- A Resources become limited over long periods of time.
  - B Populations often increase rapidly and without warning.
  - C Competition is fierce among members of different species.
  - D Some organisms survive and reproduce better than others.
27. Which is the **best** evidence that two animals had a common ancestor?
- A Both animals have a rare enzyme whose biochemical analysis matches.
  - B Both animals occupy a similar environmental niche.
  - C Both animals have evolved similar skeletal structures adapted to running.
  - D Both animals have the same number of chromosomes.

28. Variety within a species is **most likely** to result from which situation?

- A severe weather conditions that might occur, such as hurricanes or blizzards
- B adaptation to local environmental characteristics by isolated populations of the species
- C the extinction of competing species over a broad range of habitats
- D sex-specific coloring differences

29. Which could be considered biochemical evidence of an evolutionary relationship?

- A absence of vestigial structures
- B presence of embryonic gill slits
- C similar anatomical structures
- D presence of identical proteins

30. Which is the **best** evidence of an evolutionary relationship between two organisms?

- A similarity in behavior
- B similarity in niche
- C similarity in habitat
- D similarity in DNA

### End of Goal 3 Sample Items

*In compliance with federal law, including the provisions of Title IX of the Education Amendments of 1972, the Department of Public Instruction does not discriminate on the basis of race, sex, religion, color, national or ethnic origin, age, disability, or military service in its policies, programs, activities, admissions or employment.*









## Sample Items Key Report

---

- 21 Objective: 3.05**  
Examine the development of the theory of evolution by natural selection including:  
a. Development of the theory.  
b. The origin and history of life and Fossil and biochemical evidence.  
c. Mechanisms of evolution.  
d. Applications (pesticide and antibiotic resistance).  
**Thinking Skill:** Generating **Correct Answer:** D
- 22 Objective: 3.05**  
Examine the development of the theory of evolution by natural selection including:  
a. Development of the theory.  
b. The origin and history of life and Fossil and biochemical evidence.  
c. Mechanisms of evolution.  
d. Applications (pesticide and antibiotic resistance).  
**Thinking Skill:** Analyzing **Correct Answer:** A
- 23 Objective: 3.05**  
Examine the development of the theory of evolution by natural selection including:  
a. Development of the theory.  
b. The origin and history of life and Fossil and biochemical evidence.  
c. Mechanisms of evolution.  
d. Applications (pesticide and antibiotic resistance).  
**Thinking Skill:** Knowledge **Correct Answer:** D
- 24 Objective: 3.05**  
Examine the development of the theory of evolution by natural selection including:  
a. Development of the theory.  
b. The origin and history of life and Fossil and biochemical evidence.  
c. Mechanisms of evolution.  
d. Applications (pesticide and antibiotic resistance).  
**Thinking Skill:** Applying **Correct Answer:** B
- 25 Objective: 3.05**  
Examine the development of the theory of evolution by natural selection including:  
a. Development of the theory.  
b. The origin and history of life and Fossil and biochemical evidence.  
c. Mechanisms of evolution.  
d. Applications (pesticide and antibiotic resistance).  
**Thinking Skill:** Analyzing **Correct Answer:** C

