

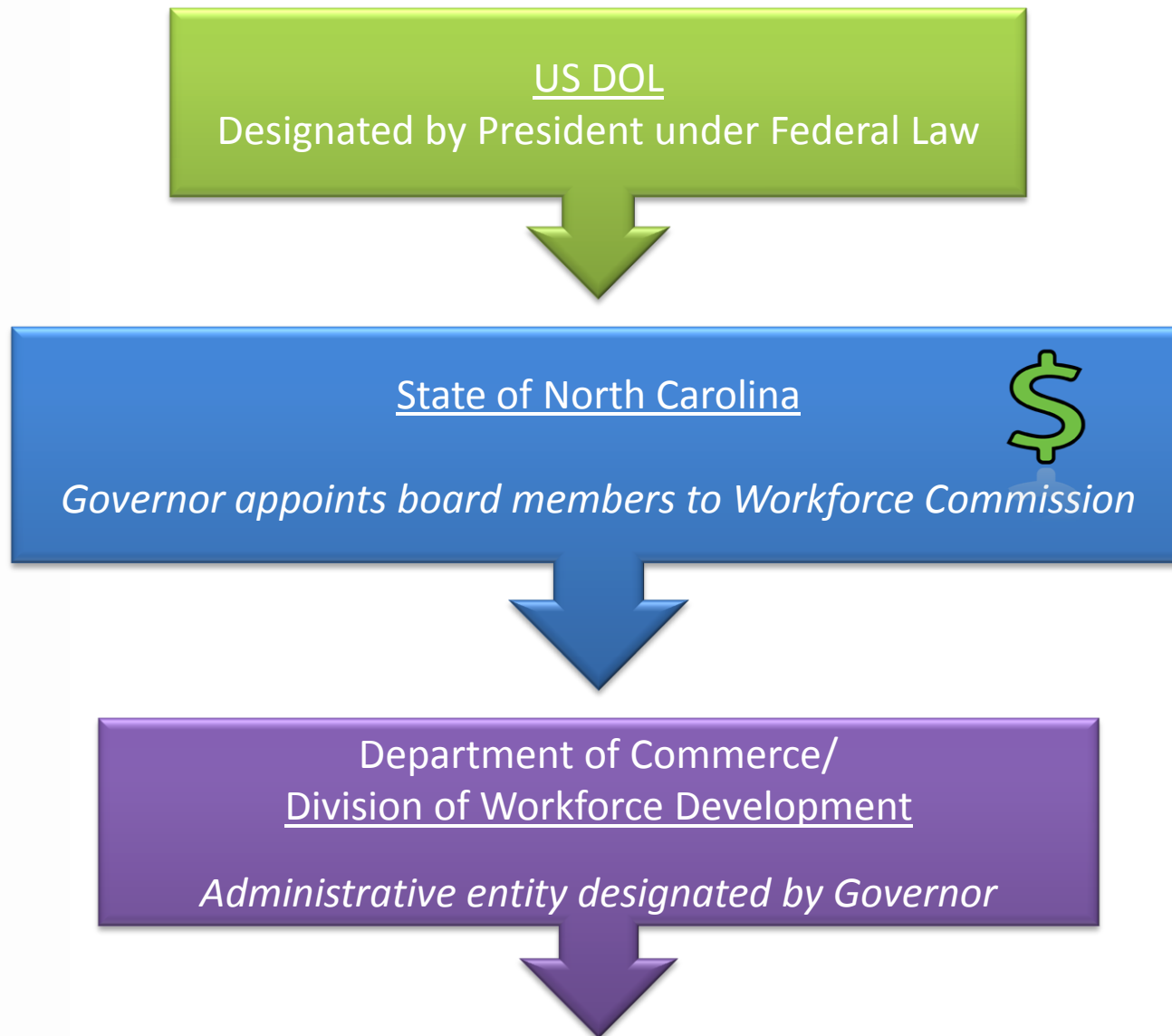
North Carolina Workforce Development Boards

Beth Lucas
State Superintendent's Career-Ready Commission
July 28, 2009

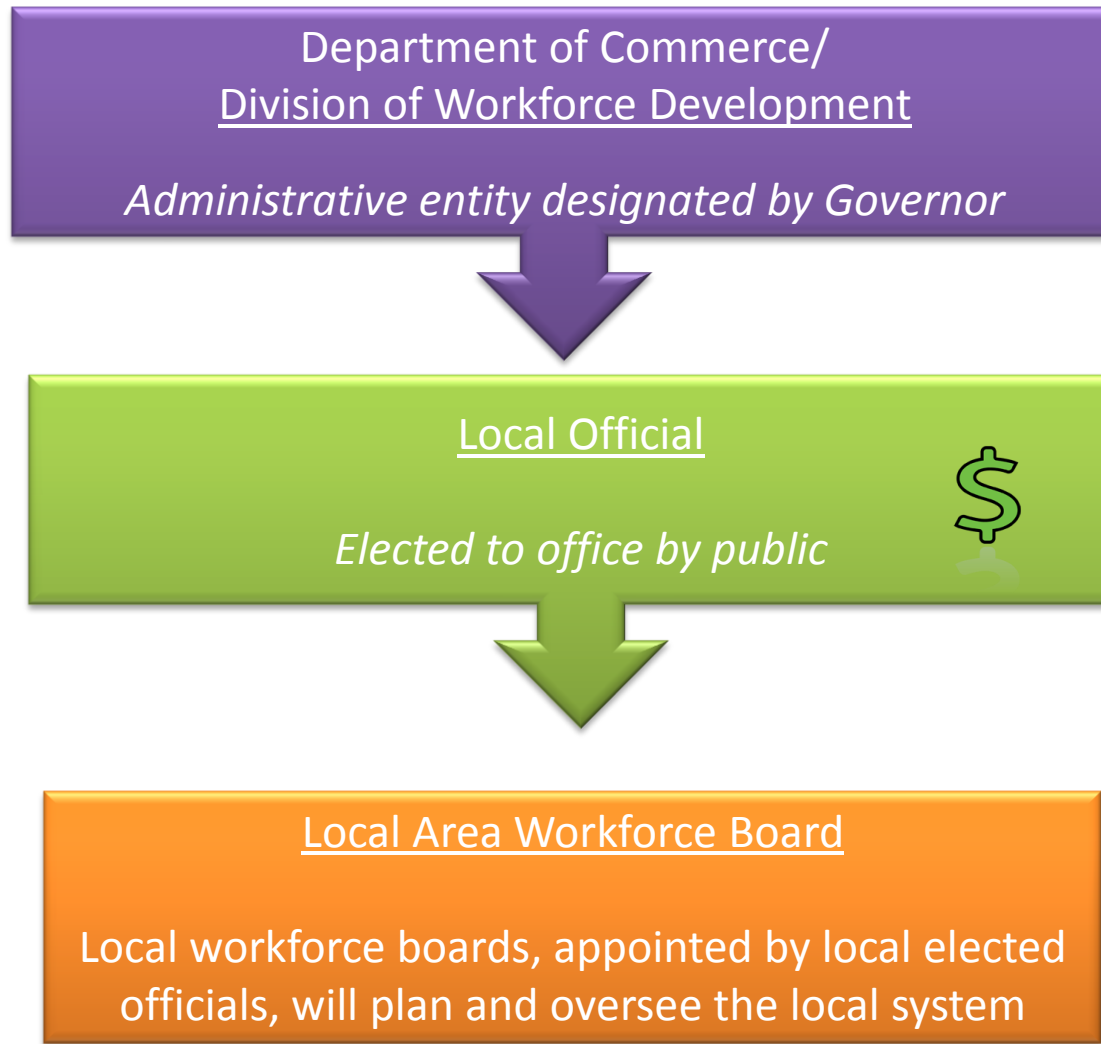


NORTH CAROLINA
the state of minds

WIA Funding Stream – State Level



WIA Funding Stream – Local Level



Commission Charge

The North Carolina Commission on Workforce Development is challenged with recommending policies and strategies that will enable the state's workforce to compete in the current and future global economy. The Commission is charged with creating an effective, coherent and comprehensive workforce system from the numerous workforce programs administered through various state and local agencies.

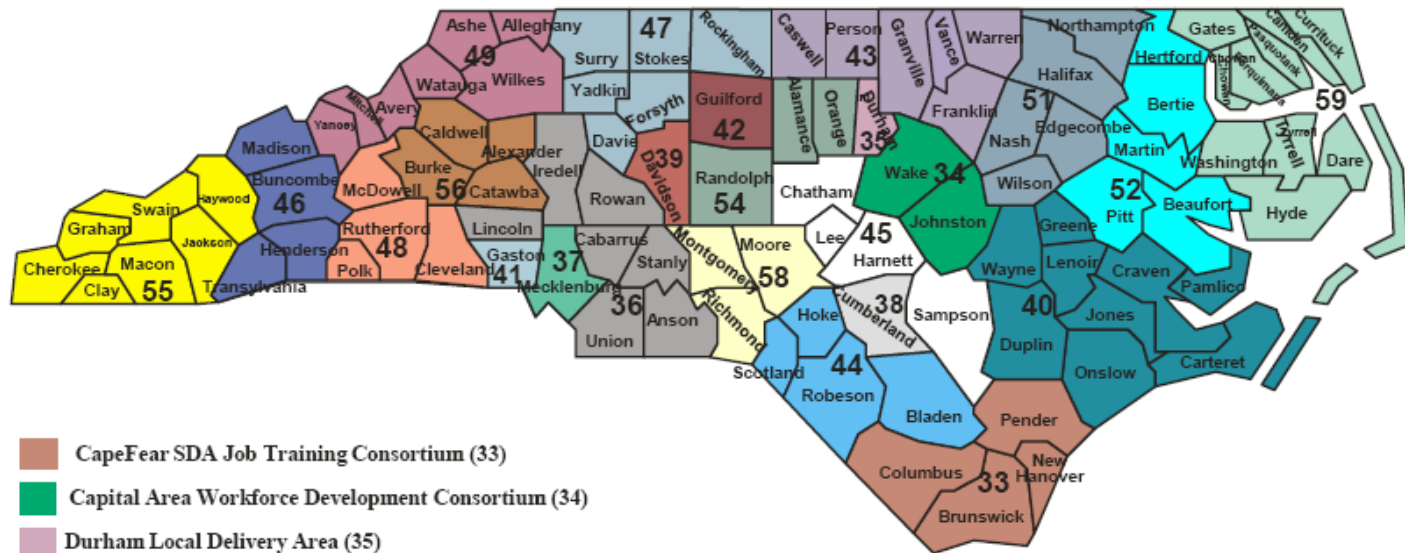


Commission/Board Roles

- Develop and coordinate skilled workforce strategies with business, education, and government agencies
- Advise the Governor, General Assembly, etc. on workforce policies and programs (local officials for boards)
- Establish, develop, and oversee the JobLink Career Center System
- Serve as the Workforce Investment Board



North Carolina Workforce Investment Act Local Areas



- Cape Fear SDA Job Training Consortium (33)
- Capital Area Workforce Development Consortium (34)
- Durham Local Delivery Area (35)
- Centralina Workforce Development Consortium (36)
- Charlotte/Mecklenburg Workforce Development Consortium (37)
- Cumberland County Local Area (38)
- DavidsonWorks (39)
- Eastern Carolina Workforce Development Board (40)
- Gaston County Local Area (41)
- Greensboro/High Point/Guilford Workforce Development Training Consortium (42)
- Kerr-Tar Interlocal Cooperative Consortium for Job Training (43)
- Lumber River Job Training Consortium (44)
- Mid-Carolina Local Workforce Investment Area (45)
- Mountain Local Area (46)
- Northeastern Workforce Investment Consortium (59)
- Northwest Piedmont Job Training Consortium WDB (47)
- Pee Dee Region Workforce Consortium (58)
- Region C Workforce Development Consortium (48)
- High County Workforce Development Consortium (49)
- Turning Point Workforce Development Consortium (51)
- Region Q Workforce Investment Consortium (52)
- Regional Partnership Consortium (54)
- Southwestern Workforce Development Consortium (55)
- Western Piedmont Job Training Consortium (56)

Current Initiatives

- Allied Health and Green Sectors
- Incumbent Worker
- Career Readiness Certificate
- Regional Planning
- State of the Workforce
- 12 in 6
- Business Recruitment Team



Beth G. Lucas, Ed.D

Policy and Governance Director

Workforce Division

NC Department of Commerce

313 Chapanoke Road, Suite 120

Raleigh, NC 27603

919.329.5233 (Office)

919.329.5585 (Fax)

email: blucas@nccommerce.com

web: www.nccommerce.com



NORTH CAROLINA
the state of minds